

PLANE RAB103069

HANDHELD PLANE - WALL & FLOOR



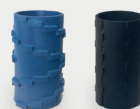
The **PLANE** has been developed with our brushless motors (noiseless, vibration free, increased longevity, and waterproof) for renovation, construction, demolition, asbestos removal, and dismantling purposes. It allows you to perform heavy-duty tasks such as removing plaster, resin, bitumen, and more.

This plane is compatible with various ergonomics tools from our range, making wall planing effortless, with a removal capacity of **13 mm in a single pass for coatings, concrete and plaster.**

This machine must be used with an **IP65 electronic speed controller** and an **industrial vacuum with LONGOPAC® for proper operation.**

PROTECTION INDEX	IP65
WEIGHT	14 kg
SOUND LEVEL	59 dB
Ø DRUMS	165 mm
BORE	DAISY
POWER OUTPUT	1 600 W
VIBRATION	0,35 M.S ²
ROTATION	4 800 - 9 600 RPM
VOLTAGE	110 V / 220 V
DIMENSIONS	0,36 x 0,21 x 0,18 m

ACCESSORIES



DIAMOND DRUMS



TRANSPORT CASE